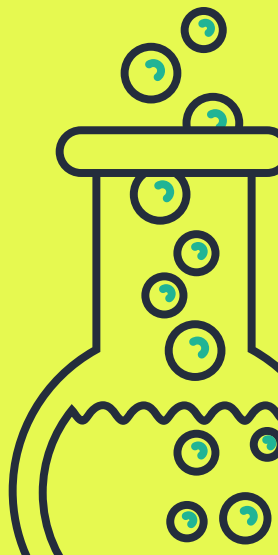
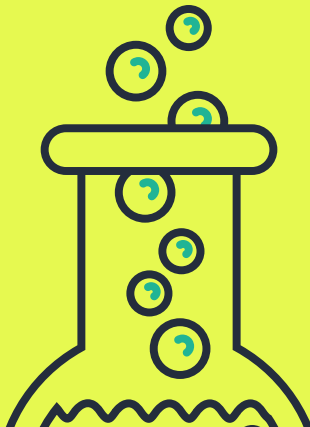
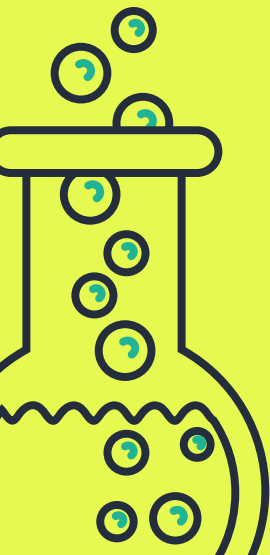


**WESTWOOD COLLEGE SCIENCE  
DEPARTMENT**

# MARBLE RUN CHALLENGE

Show us your mastery of science and engineering  
by designing a marble run that lasts as close to 60  
seconds as possible!



# THE RULES

1. Using any resources you can find at home, design and build a track for a marble (or other type of ball) that lasts as close to 60 seconds as possible, start to finish.
2. Record a video of your track in action, showing the entire run in one take.
3. The time will start the moment the ball starts moving and stops when the ball stops.
4. To ensure there is no sneaky video editing, record a running clock or stopwatch for 5 seconds before starting the run (<https://www.timeanddate.com/stopwatch/>).
5. You cannot use any toys or devices that were designed for this purpose (e.g. a marble rollercoaster toy).
6. The run closest to 60 seconds (to the nearest whole second) wins. In the event of a tie, the most creative track will win.

# HOW TO SUBMIT YOUR VIDEO

1. Email your video submissions to [lowen@ttl.org.uk](mailto:lowen@ttl.org.uk) with the subject: 'marble run challenge'
2. If the file size is too large to send:
  - a. Upload it to a cloud storage service (e.g. Onedrive or Dropbox) and send a link to that file.
  - b. Upload to a video site like Youtube or Vimeo and send a link to that.

Here's a video for some inspiration. Good luck!

